

Diskeeper Cuts Nightly Backup Time in Half!



Altercare of Ohio, Inc. specializes in providing advanced medical rehabilitation, skilled nursing care and quality assisted living. As a family-owned company, Altercare is dedicated to providing an environment of care, a comprehensive range of services and has approximately 2500 compassionate and capable employees that meet the highest standards. They provide nursing home care, rehabilitation (physical, occupational, speech) therapy, pharmacy, temporary staffing, food distribution, billing and medical supplies.

System infrastructure: Altercare implemented a new disk-to-disk-to-tape server backup solution.

As they added more servers onto the backup system the disk-to-disk storage requirements grew. IT staff observed that as the free space got below 35% the performance took a quick turn for the worse. Nightly backups were no longer finished by morning and in fact continued throughout the day. Some servers were taking 3 times longer to backup than before. The disk-to-disk performance problem was affecting the disk-to-tape jobs as well. After a point they were no longer backing up current data. Ideally, they wanted the backup window to be as small as possible and still catch everything. It was not only a LAN issue. The servers were all connected to new GB Ethernet switches.

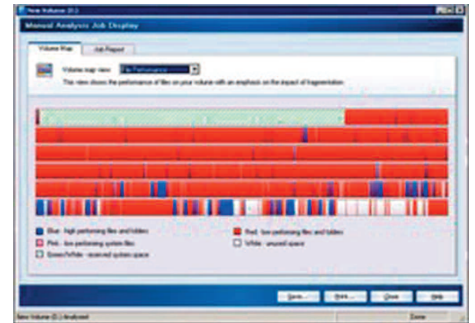
This multi-faceted healthcare corporation runs a Windows 2003 64 bit server with a 3 TB RAID5 array and Backup Exec™ to do disk-to-disk-to-tape of all servers every night

including a new ERP system. There is also a virtual server on this machine. This busy server hosts target directories for SQL® maintenance plans which copy backups of databases and transaction logs.

Bill Louth is the Senior Systems Administrator for Altercare: "If we hadn't implemented Diskeeper EnterpriseServer when we did, our backup jobs would not have been able to complete within 24 hours. Even if they did complete within 24 hours, what do you do if you need to restore data? You have to wait many hours until the current backup is finished or start cancelling jobs. If I need to restore data, I don't want to tell the users we'll have to wait until afternoon to get it," he added.

"Diskeeper is the only thing keeping our multi-terabyte disk array able to perform as a repository for all the Backup Exec and SQL backup jobs. We have records in the Backup Exec logs showing backup performance degradation over time, and the later improved results after installing Diskeeper Enterprise Server," reported Louth.

I also appreciate Diskeeper's excellent and courteous technical support. It's among the best in the industry."



Before



After

Altercare, Inc 7235 Whipple Ave NW – Canton, OH www.altercare.com

Backup Time Examples from our Backup Exec logs before and after:			
Server A	232GB	Before 8:41 elapsed time	After 1:42 elapsed time
Server B	100GB	Before 5:58 elapsed time	After 3:53 elapsed time
Server C	30GB	Before 6:30 elapsed time	After 1:46 elapsed time
Server D	73GB	Before 7:33 elapsed time	After 2:56 elapsed time

"Before Diskeeper, the fragmentation got out of control. Every day Diskeeper moves about 500-800GB of new data," said Louth. "We have a 3TB array with the EnterpriseServer installed. Without Diskeeper running there was no way to defrag the volume and those backups were taking at least 2-3 times longer. Here are the more serious results: Our nightly Backup Exec 12-hour window has been reduced by 6+ hours."

Then Louth told us more about the return on investment: "The ROI is that our backup jobs would never finish without Diskeeper.